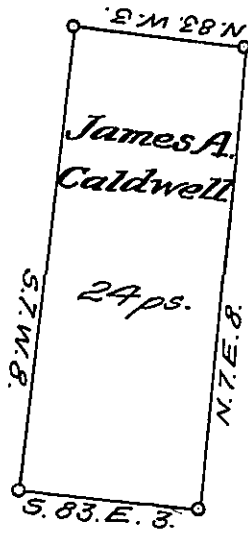




York County Shore



Lancaster County Shore

A Draught of an Island situate in Little Britain township in the County of Lancaster Opposite the land of Jeremiah Brown on the East and about eight perches below Caldwell's Islands containing Twenty four perches Strict Measure Surveyed in pursuance of a Warrant dated the 2nd day of December AD 1818 granted to James A. Caldwell.

p^c Jacob Hibshman D.S.

To Jacob Spangler Esquire }
 Surveyor General. }

IN TESTIMONY that the above is a copy of the original remaining on file in the Department of Internal Affairs of Pennsylvania, made conformably to an Act of Assembly approved the 16th day of February, 1833, I have hereunto set my Hand and caused the Seal of said Department to be affixed at Harrisburg, this ninth day of December 1907.

Henry Howell
 Secretary of Internal Affairs.